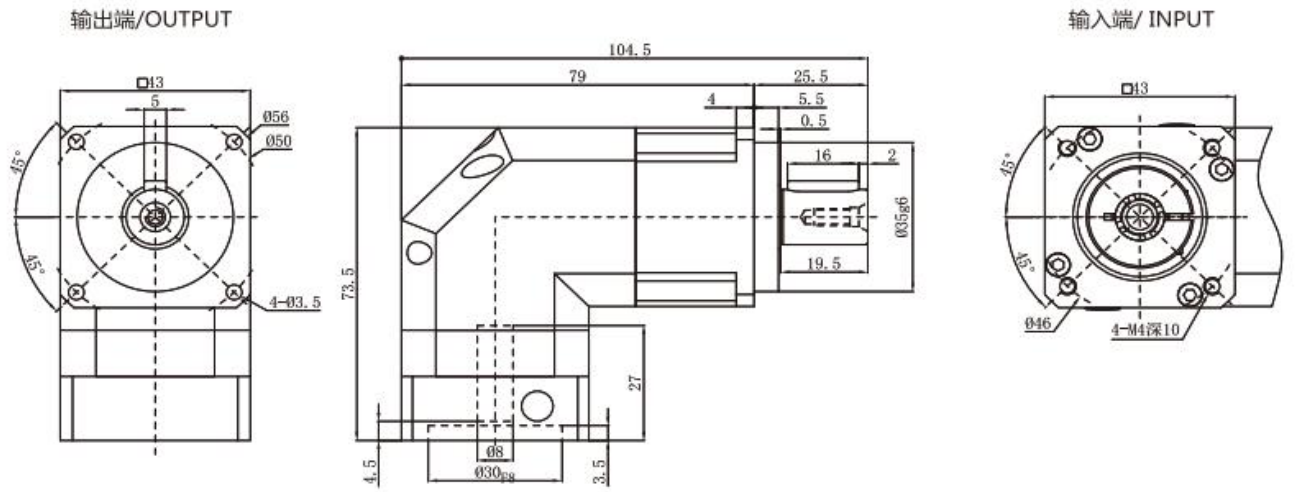
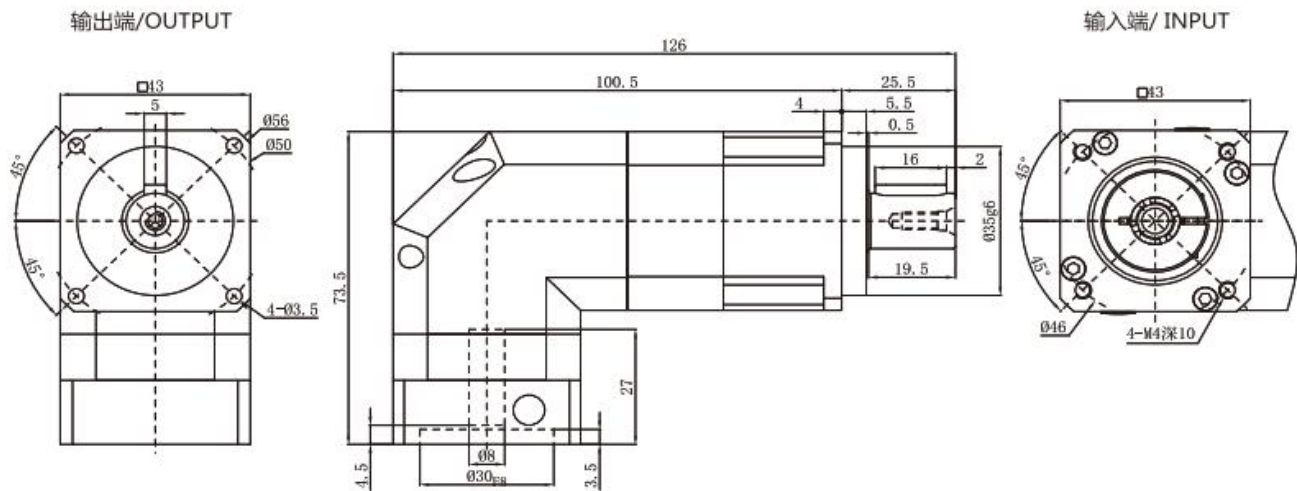


外形尺寸图表 / OUTLINE DIMENSION SHEET

PGHR 042-L1



PGHR 042-L2



输出轴径/Output Diameter

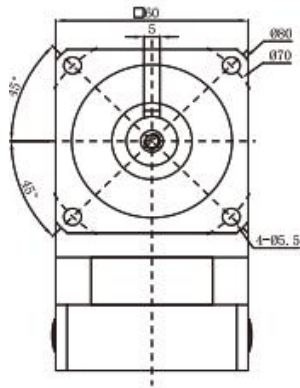


*输入马达连接板之尺寸, 可根据客户要求单独定做。
*The input motor specific dimensions could be customised.

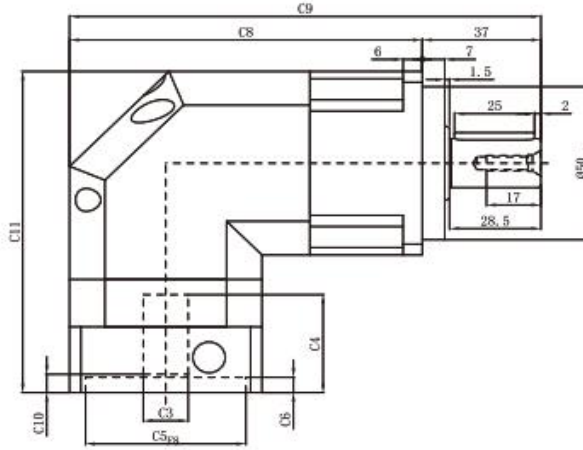
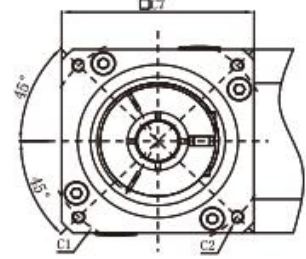
外形尺寸图表 / OUTLINE DIMENSION SHEET

PGHR060-L1

输出端/OUTPUT

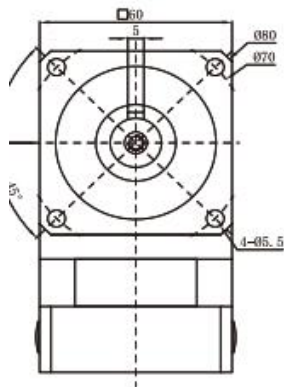


输入端/INPUT

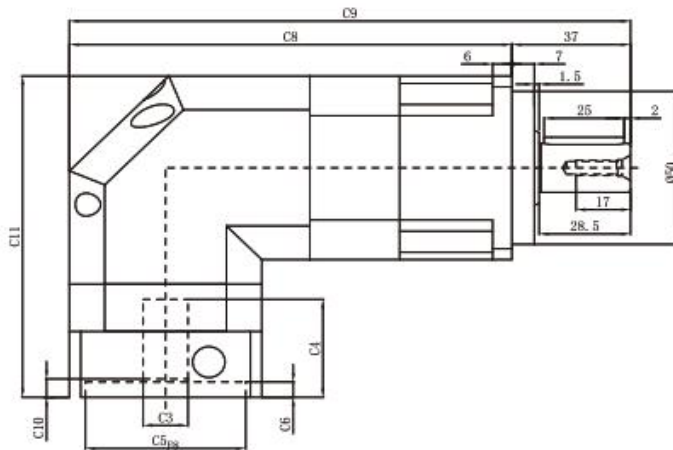
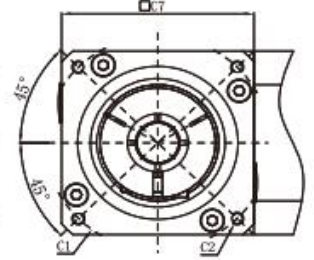


PGHR060-L2

输出端/OUTPUT



输入端/INPUT



输出轴径/Output Diameter



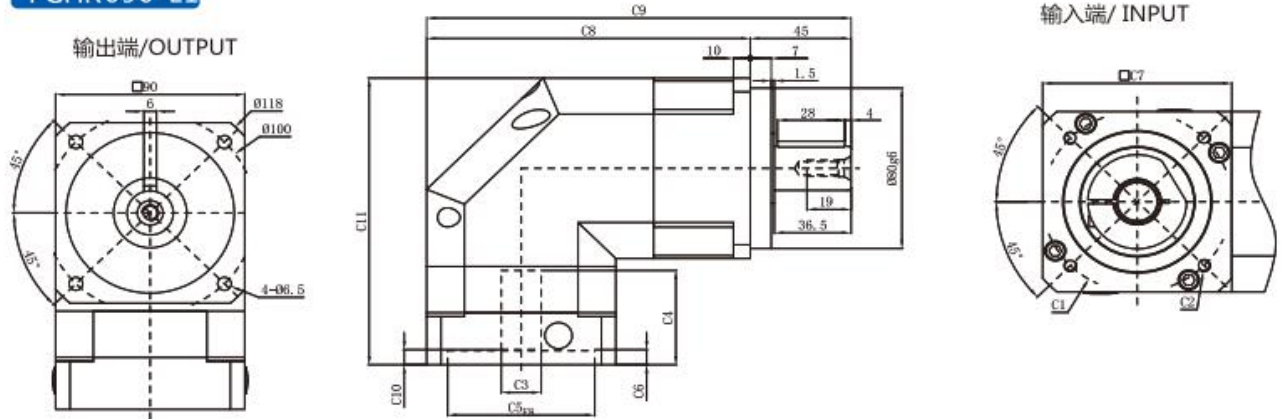
*输入马达连接板之尺寸, 可根据客户要求单独定做。
*The input motor specific dimensions could be customised.

尺寸	C1	C2	C3	C4	C5	C6	C7	C8	C9	C10	C11
PGHR 060-L1	φ 46	4-M4x12,4-M5x12	≦ φ 8	37.5	φ 30	10.5	60	110	147	11.5	110.5
	φ 66.7	4-M4x12	≦ φ 8	32	φ 38.1	5	60	110	147	5.5	105
	φ 70	4-M4x10,4-M5x12	≦ φ 14	32	φ 50	5	60	110	147	6	105
	φ 75	4-M4x12,4-M5x12	≦ φ 14	32	φ 60	5	66	113	150	6	105
	φ 90	4-M6x15	≦ φ 19	42	φ 70	7	80	120	160	11	117
PGHR 060-L2	φ 100	4-M6x15	≦ φ 19	44	φ 80	7	90	120	160	11	117
	φ 46	4-M4x12,4-M5x12	≦ φ 8	37.5	φ 30	10.5	60	138	175	11.5	110.5
	φ 66.7	4-M4x12	≦ φ 8	32	φ 38.1	5	60	138	175	5.5	105
	φ 70	4-M4x10,4-M5x12	≦ φ 14	32	φ 50	5	60	138	175	6	105
	φ 75	4-M4x12,4-M5x12	≦ φ 14	32	φ 60	5	66	141	178	6	105
	φ 90	4-M6x15	≦ φ 19	42	φ 70	7	80	148	188	11	117
	φ 100	4-M6x15	≦ φ 19	44	φ 80	7	90	148	188	11	117

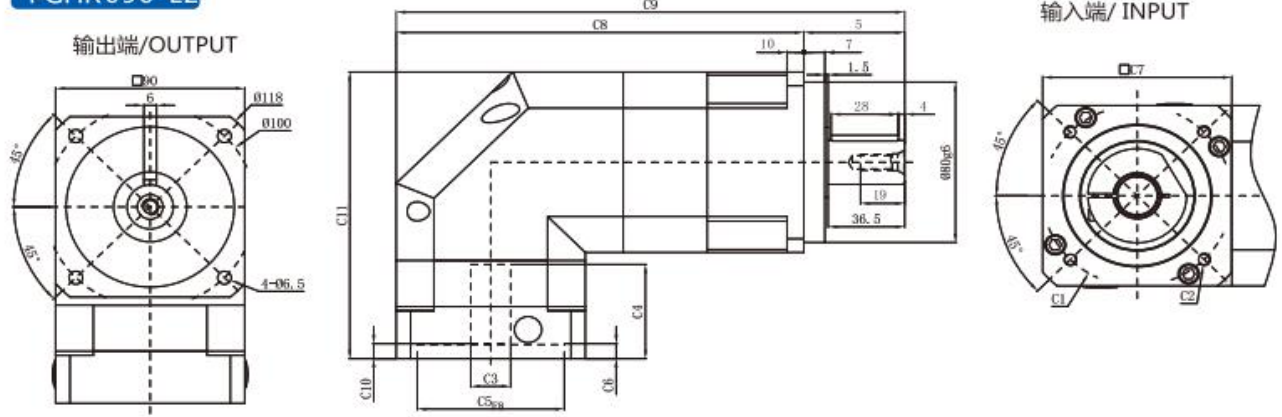
* C1~C11 是公制标准马达连接板之尺寸, 可根据客户要求单独定做。
* C1~C11 are motor (metric standard) specific dimensions, which could be customised.

外形尺寸图表 / OUTLINE DIMENSION SHEET

PGHR090-L1



PGHR090-L2



输出轴径/Output Diameter



*输入马达连接板之尺寸, 可根据客户要求单独定做。
*The input motor specific dimensions could be customised.

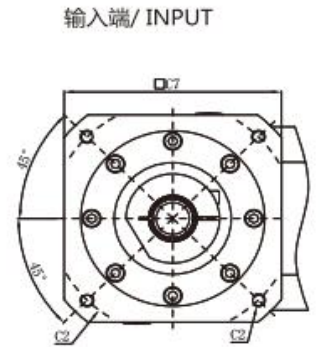
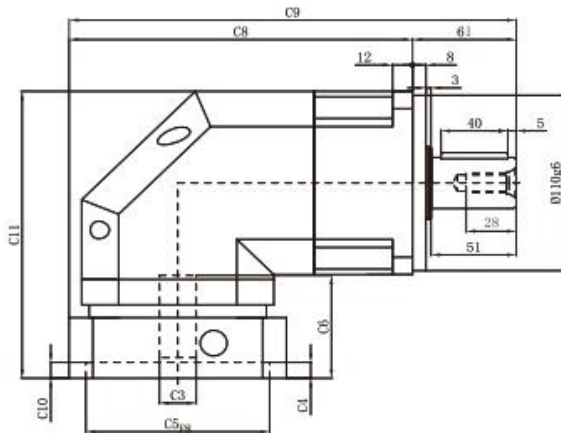
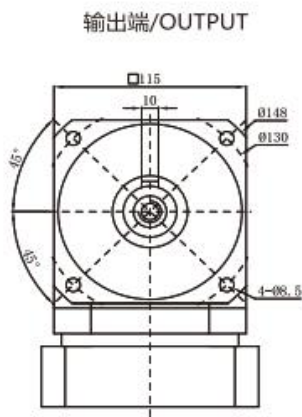
尺寸	C1	C2	C3	C4	C5	C6	C7	C8	C9	C10	C11
PGHR 090-L1	φ 70	4-M4x10,4-M5x12	≦ φ 14	47	φ 50	4	90	154	202	6.5	143
	φ 75	4-M4x12,4-M5x12	≦ φ 14	47	φ 60	5.5	90	154	202	6.5	143
	φ 90	4-M5x15,4-M6x15	≦ φ 19	47	φ 70	7	90	154	202	7.5	143
	φ 98.4	4-M5x15,4-M6x15	≦ φ 14	47.5	φ 73	7	90	154	202	7.5	143
	φ 98.4	4-M6x15	≦ φ 14	47.5	φ 60	7	90	154	202	7.5	143
	φ 100	4-M6x15	≦ φ 19	47.5	φ 80	7	90	154	202	12.5	143
	φ 115	4-M8x20	≦ φ 24	59	φ 95	10	100	159	207	12.5	155
	φ 130	4-M8x20	≦ φ 24	59	φ 95	10	115	166.5	214.5	12.5	155
	φ 145	4-M8x20	≦ φ 24	59	φ 110	10	130	174	262	12.5	155
φ 145	4-M8x20	≦ φ 24	68	φ 110	10	130	174	262	21.5	164	
PGHR 090-L2	φ 70	4-M4x10,4-M5x12	≦ φ 14	47	φ 50	4	90	194	262	6.5	143
	φ 75	4-M4x12,4-M5x12	≦ φ 14	47	φ 60	5.5	90	194	262	6.5	143
	φ 90	4-M5x15,4-M6x15	≦ φ 19	47	φ 70	7	90	194	262	7.5	143
	φ 98.4	4-M5x15,4-M6x15	≦ φ 14	47.5	φ 73	7	90	194	262	7.5	143
	φ 98.4	4-M6x15	≦ φ 14	47.5	φ 60	7	90	194	262	7.5	143
	φ 100	4-M6x15	≦ φ 19	47.5	φ 80	7	90	194	262	12.5	143
	φ 115	4-M8x20	≦ φ 24	59	φ 95	10	100	199	267	12.5	155
	φ 130	4-M8x20	≦ φ 24	59	φ 95	10	115	206.5	254.5	12.5	155
	φ 145	4-M8x20	≦ φ 24	59	φ 110	10	130	214	272	12.5	155
φ 145	4-M8x20	≦ φ 24	68	φ 110	10	130	214	272	21.5	164	

* C1~C11 是公制标准马达连接板之尺寸, 可根据客户要求单独定做。

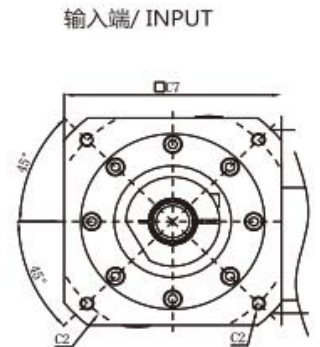
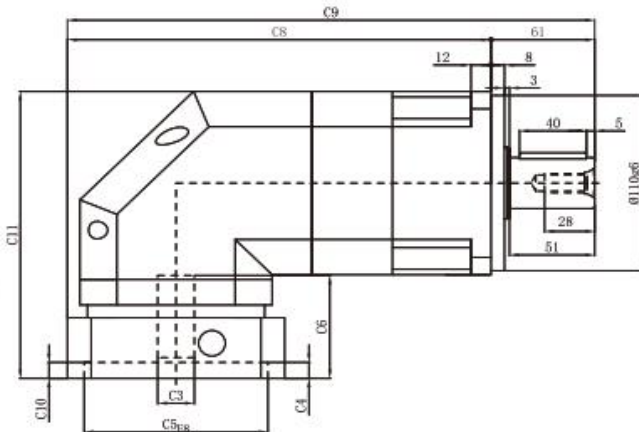
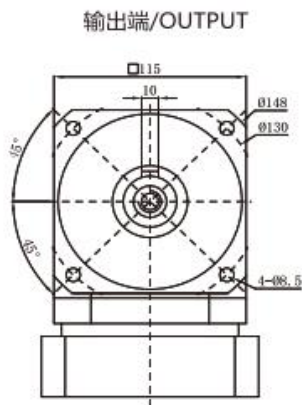
* C1~C11 are motor (metric standard) specific dimensions, which could be customised.

外形尺寸图表 / OUTLINE DIMENSION SHEET

PGHR115-L1



PGHR115-L2



输出轴径/Output Diameter



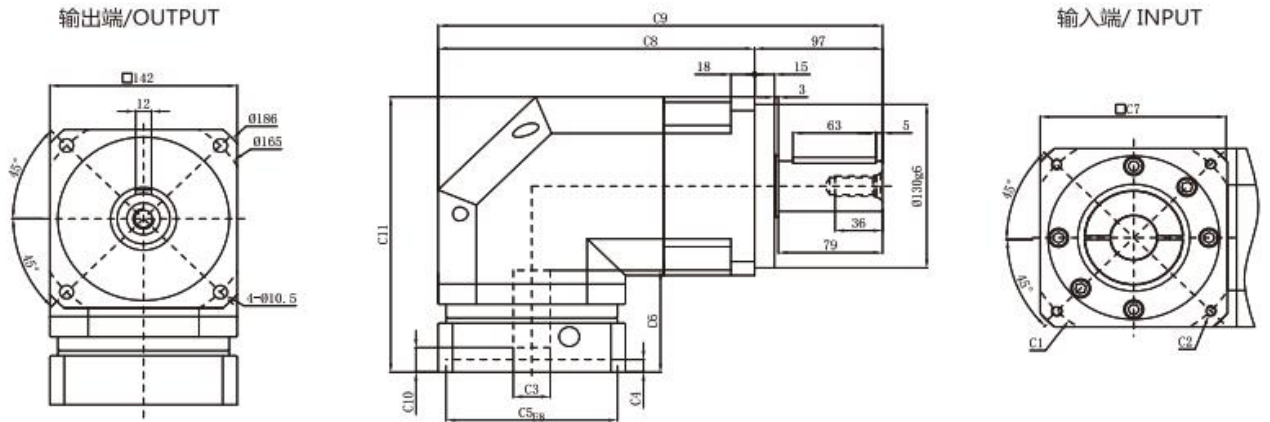
*输入马达连接板之尺寸,可根据客户要求单独定做。
*The input motor specific dimensions could be customised.

尺寸	C1	C2	C3	C4	C5	C6	C7	C8	C9	C10	C11
PGHR115-L1	φ 90	4-M5x15,4-M6x15	≦ φ 19	62	φ 70	7	115	198	260	12	180
	φ 100	4-M6x15	≦ φ 19	62	φ 80	7	115	198	260	12	180
	φ 115	4-M8x20	≦ φ 24	62	φ 95	10	115	198	260	13	180
	φ 130	4-M8x20	≦ φ 24	62	φ 95	10	115	198	260	13	180
	φ 132	4-M8x20	≦ φ 24	62	φ 95	10	115	198	260	13	180
	φ 145	4-M8x20	≦ φ 24	62	φ 110	10	130	205.5	267.5	13	180
PGHR115-L2	φ 90	4-M5x15,4-M6x15	≦ φ 19	62	φ 70	7	115	246	260	12	180
	φ 100	4-M6x15	≦ φ 19	62	φ 80	7	115	246	260	12	180
	φ 115	4-M8x20	≦ φ 24	62	φ 95	10	115	246	260	13	180
	φ 130	4-M8x20	≦ φ 24	62	φ 95	10	115	246	260	13	180
	φ 132	4-M8x20	≦ φ 24	62	φ 95	10	115	246	260	13	180
	φ 145	4-M8x20	≦ φ 24	62	φ 110	10	130	253.5	315.5	13	180
φ 145	4-M8x20	≦ φ 24	71	φ 110	10	130	253.5	315.5	22	189	

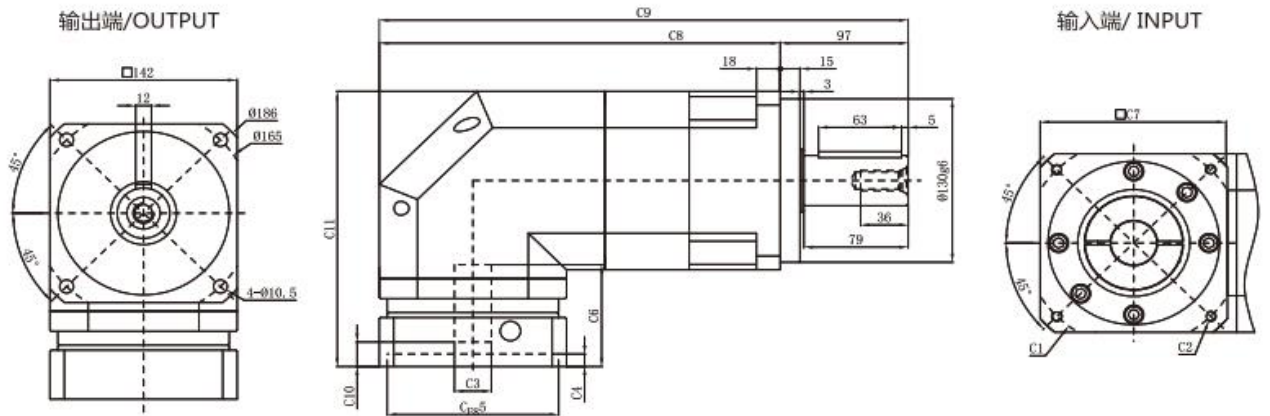
* C1~C11 是公制标准马达连接板之尺寸,可根据客户要求单独定做。
* C1~C11 are motor (metric standard) specific dimensions, which could be customised.

外形尺寸图表 / OUTLINE DIMENSION SHEET

PGHR142-L1



PGHR142-L2



输出轴径/Output Diameter



*输入马达连接板之尺寸,可根据客户要求单独定做。
*The input motor specific dimensions could be customised.

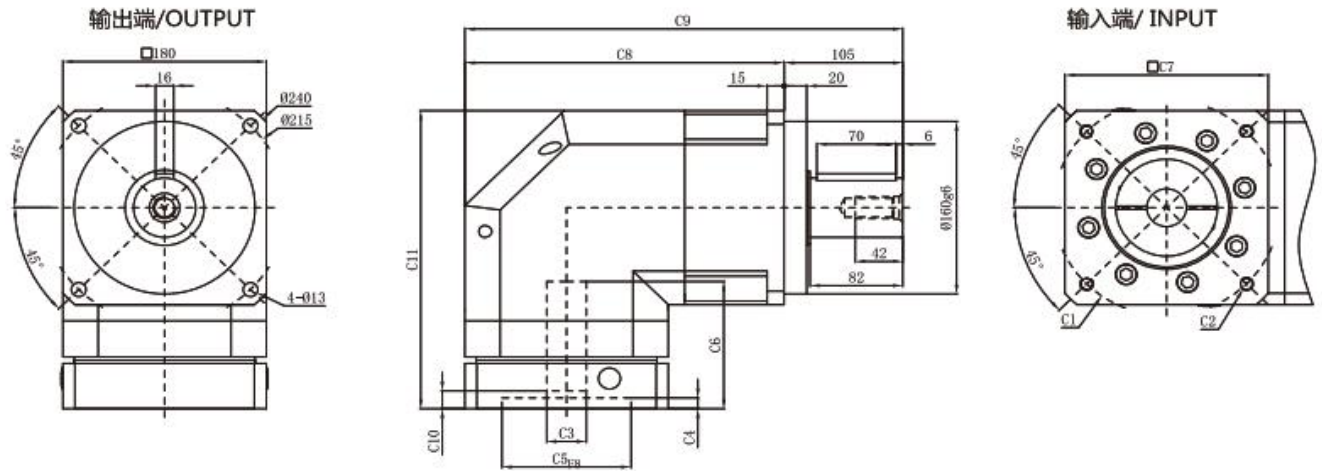
尺寸	C1	C2	C3	C4	C5	C6	C7	C8	C9	C10	C11
PGHR142-L1	φ130	4-M8x20	≦ φ24	81	φ110	10	142	240	337	19.5	219
	φ145	4-M8x20	≦ φ28	81	φ110	10	142	240	337	19.5	219
	φ165	4-M10x25, 4-M12x35	≦ φ32	81	φ130	10	142	240	337	19.5	219
	φ200	4-M12x35	≦ φ42	83	φ114.3	8	180	259	356	21.5	221
	φ215	4-M12x35	≦ φ42	83	φ180	8	190	264	361	21.5	221
PGHR142-L2	φ130	4-M8x20	≦ φ24	81	φ110	10	142	304	401	19.5	219
	φ145	4-M8x20	≦ φ28	81	φ110	10	142	304	401	19.5	219
	φ165	4-M10x25, 4-M12x35	≦ φ32	81	φ130	10	142	304	401	19.5	219
	φ200	4-M12x35	≦ φ42	83	φ114.3	8	180	323	420	21.5	221
	φ215	4-M12x35	≦ φ42	83	φ180	8	190	328	425	21.5	221

* C1~C11 是公制标准马达连接板之尺寸,可根据客户要求单独定做。

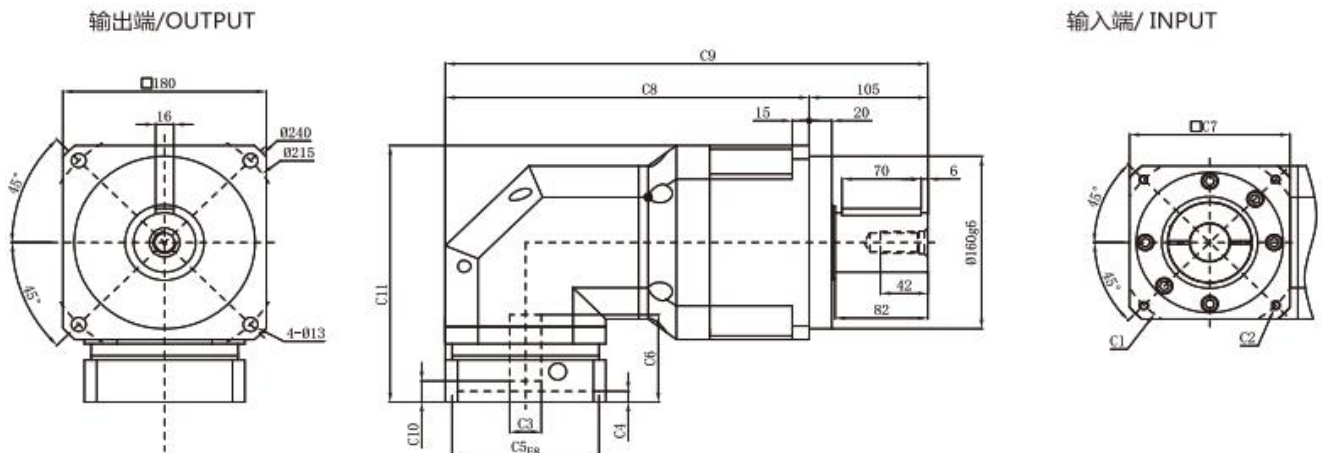
* C1~C11 are motor (metric standard) specific dimensions, which could be customised.

外形尺寸图表 / OUTLINE DIMENSION SHEET

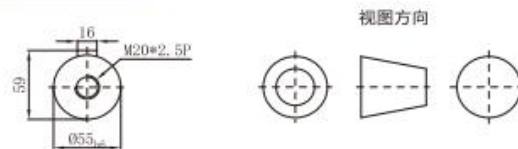
PGHR 180-L1



PGHR 180-L2



输出轴径/Output Diameter



*输入马达连接板之尺寸, 可根据客户要求单独定做。
*The input motor specific dimensions could be customised.

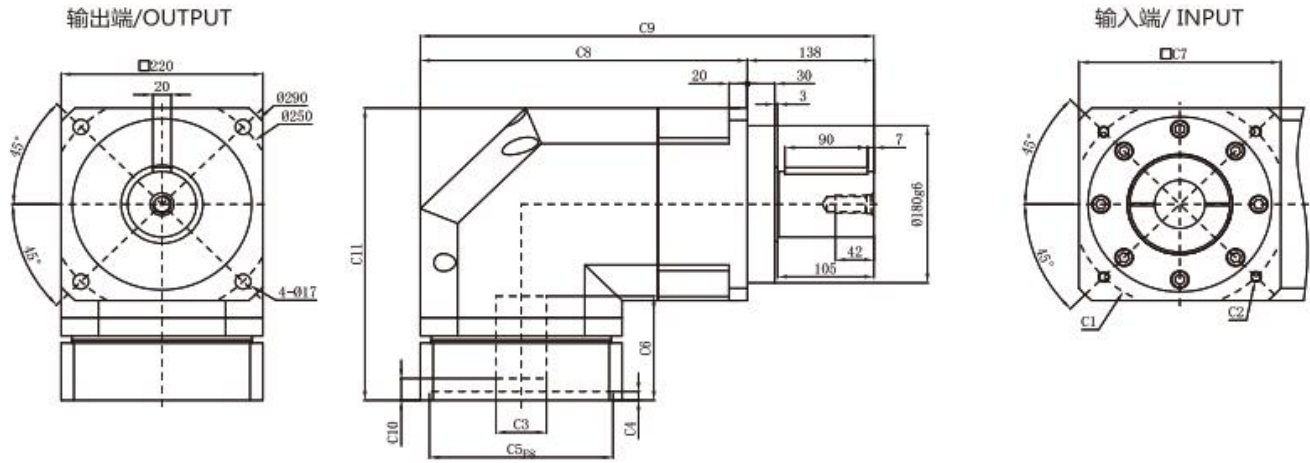
尺寸	C1	C2	C3	C4	C5	C6	C7	C8	C9	C10	C11
PGHR 180-L1	φ 165	4-M10x25, 4-M12x35	≦ φ 32	118	φ 130	10	180	282.5	387.5	16.5	276.5
	φ 200	4-M12x35	≦ φ 42	118	φ 114.3	10	180	282.5	387.5	16.5	276.5
	φ 215	4-M14x35	≦ φ 42	118	φ 180	10	190	287.5	392.5	16.5	276.5
	φ 235	4-M10x30, 4-M14x35	≦ φ 55	150	φ 200	10	220	302.5	407.5	48.5	308.5
PGHR 180-L2	φ 130	4-M8x20	≦ φ 24	81	φ 110	10	142	322	427	19.5	238
	φ 145	4-M8x20	≦ φ 24	81	φ 110	10	142	322	427	19.5	238
	φ 165	4-M10x25, 4-M12x35	≦ φ 32	81	φ 130	10	142	322	427	19.5	238
	φ 200	4-M12x35	≦ φ 42	83	φ 114.3	8	180	341	446	21.5	240
	φ 200	4-M10x25, 4-M12x35	≦ φ 42	115	φ 114.3	8	180	341	446	53.5	272
	φ 215	4-M14x35	≦ φ 42	83	φ 180	8	190	346	451	21.5	240

* C1~C11 是公制标准马达连接板之尺寸, 可根据客户要求单独定做。

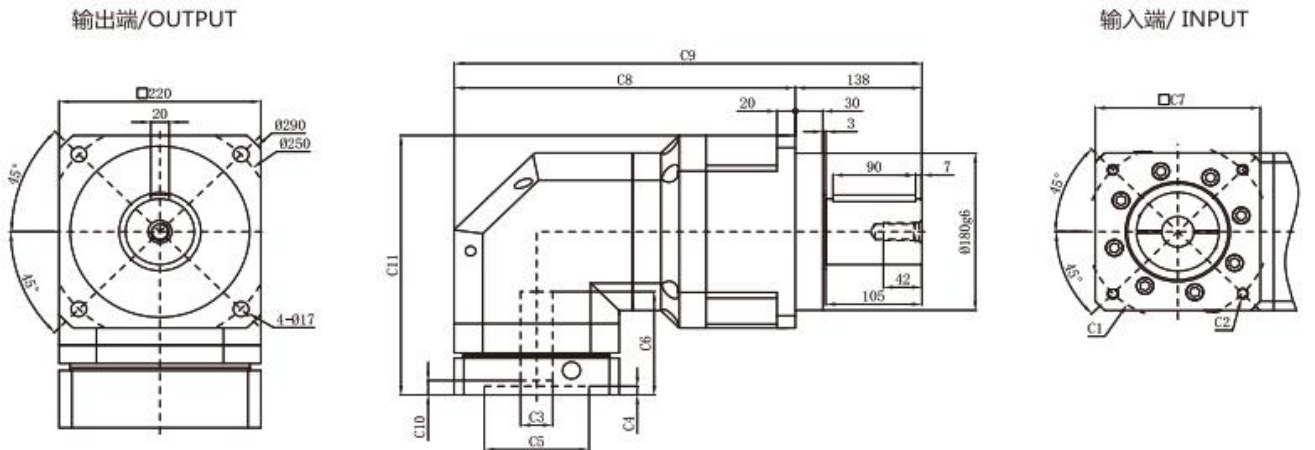
* C1~C11 are motor (metric standard) s efcific dimensions, which could be customised,

外形尺寸图表 / OUTLINE DIMENSION SHEET

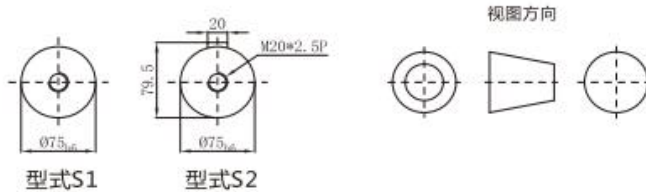
PGHR 220-L1



PGHR 220-L2



输出轴径/Output Diameter



*输入马达连接板之尺寸, 可根据客户要求单独定做。
*The input motor specific dimensions could be customised.

尺寸	C1	C2	C3	C4	C5	C6	C7	C8	C9	C10	C11
PGHR 220-L1	φ 200	4-M12x35	≤ φ 42	119	φ 114.3	10	220	356.5	494.5	25	334
	φ 215	4-M14x35	≤ φ 42	119	φ 180	10	220	356.5	494.5	25	334
	φ 235	4-M12x35, 4-M14x35	≤ φ 55	119	φ 200	10	220	356.5	494.5	25	334
PGHR 220-L2	φ 165	4-M10x25, 4-M12x35	≤ φ 32	118	φ 130	10	180	372	510	16.5	296.5
	φ 200	4-M12x35	≤ φ 42	118	φ 114.3	10	180	372	510	16.5	296.5
	φ 215	4-M12x35, 4-M14x35	≤ φ 42	118	φ 180	10	190	377	515	16.5	296.5
	φ 235	4-M12x35, 4-M14x35	≤ φ 55	150	φ 200	10	220	392	530	48.5	328.5

* C1~C11 是公制标准马达连接板之尺寸, 可根据客户要求单独定做。

* C1~C11 are motor (metric standard) specific dimensions, which could be customised.