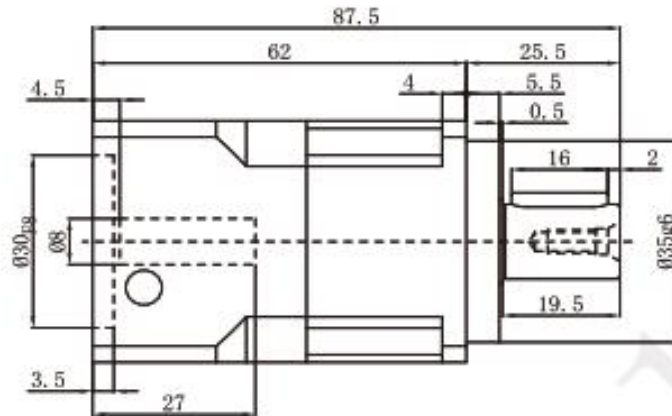
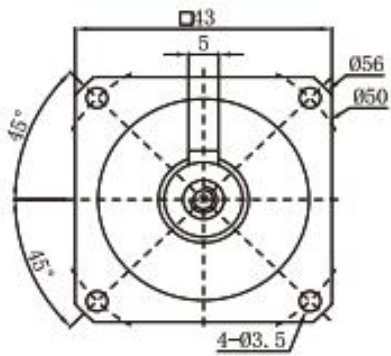


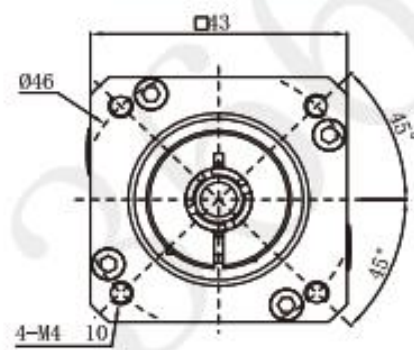
OUTLINE DIMENSION SHEET

PGH042-L1

OUTPUT

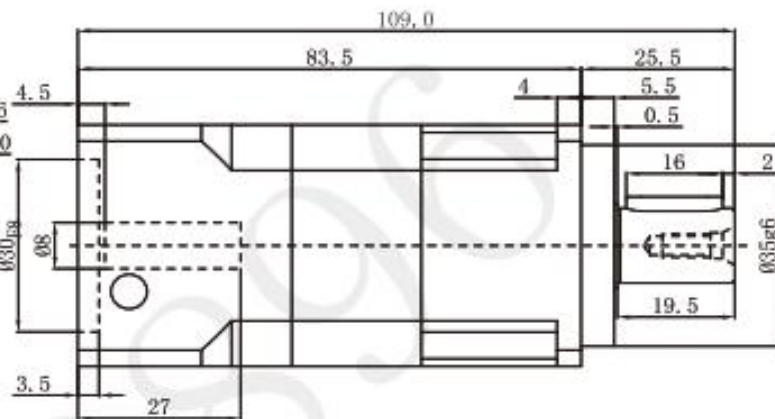
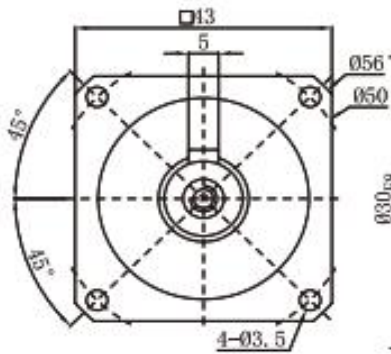


INPUT

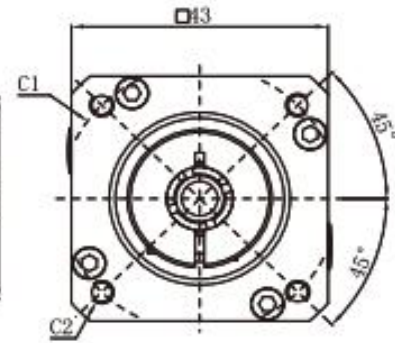


PGH042-L2

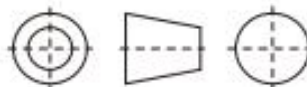
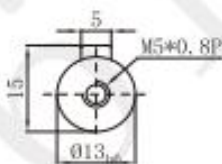
OUTPUT



INPUT



Output Diameter

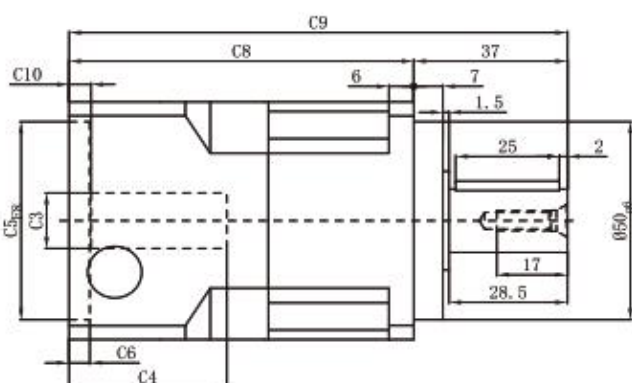
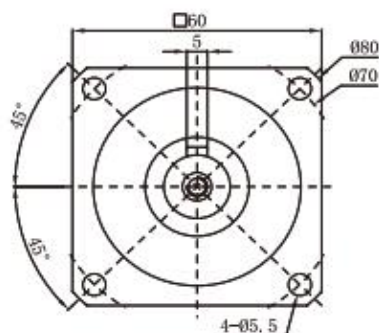


*The input motor specific dimensions could be customised.

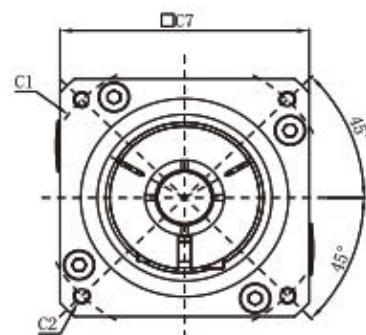
外形尺寸图表 / OUTLINE DIMENSION SHEET

PGH060-L1

输出端/OUTPUT

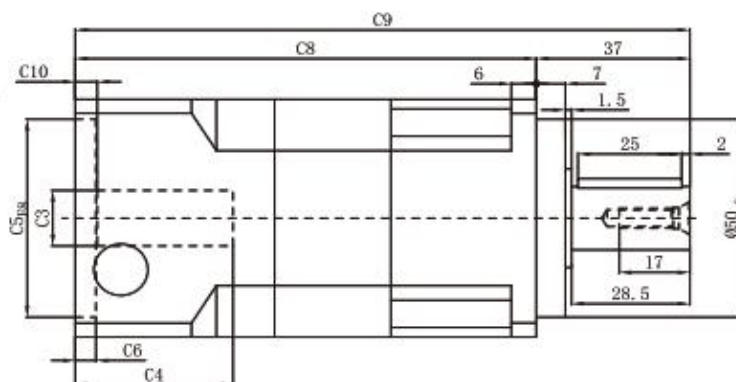
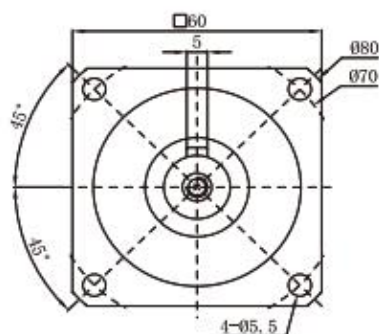


输入端/INPUT

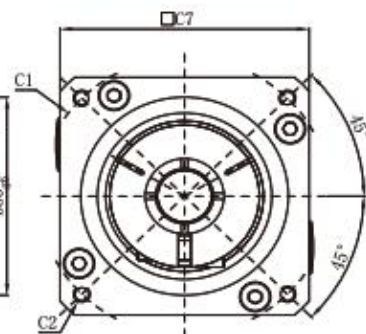


PGH060-L2

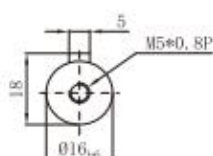
输出端/OUTPUT



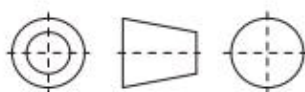
输入端/INPUT



输出轴径/Output Diameter



视图方向



*输入马达连接板之尺寸, 可根据客户要求单独定做。
*The input motor specific dimensions could be customised.

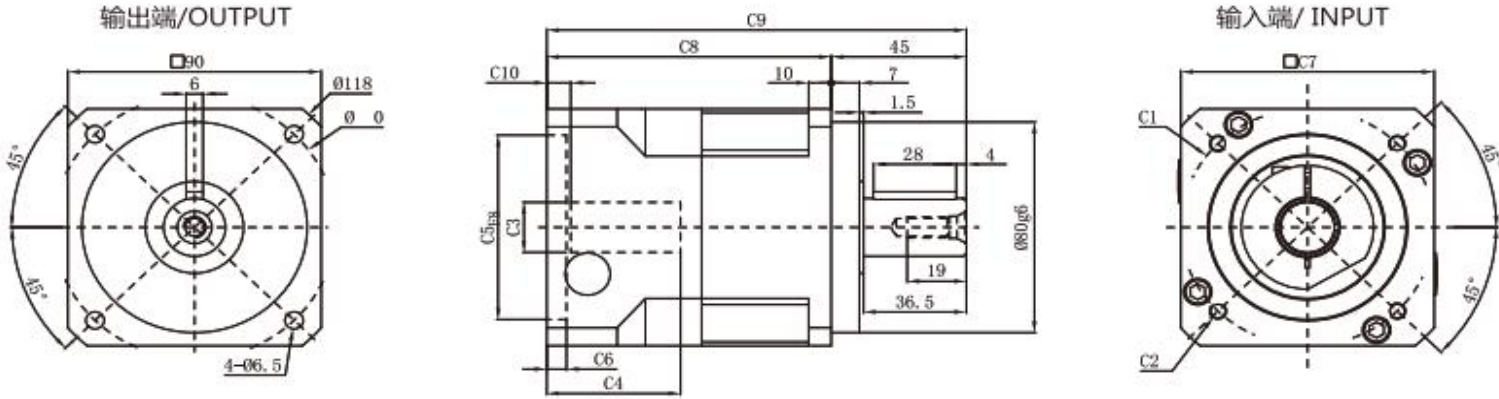
尺寸	C1	C2	C3	C4	C5	C6	C7	C8	C9	C10
PGH060-L1	φ 46	4-M4x12,4-M5x12	≦ φ 8	44	φ 30	9	60	91	126	10.3
	φ 66.7	4-M4x12	≦ φ 8	38	φ 38.1	3	60	83	120	4.3
	φ 70	4-M4x12,4-M5x12	≦ φ 14	38	φ 50	5	60	83	120	5.3
	φ 75	4-M4x12,4-M5x12	≦ φ 14	38.5	φ 60	5	66	83.5	120	5.5
	φ 90	4-M5x15,4-M6x15	≦ φ 19	44	φ 70	7	80	89	128	11
PGH060-L2	φ 100	4-M6x15	≦ φ 19	44	φ 80	7	90	89	128	11
	φ 46	4-M4x12, 4-M5x12	≦ φ 8	44	φ 30	9	60	117	154	10.3
	φ 66.7	4-M4x12	≦ φ 8	38	φ 38.1	3	60	111	148	4.3
	φ 70	4-M4x12,4-M5x12	≦ φ 14	38	φ 50	5	60	111	148	5.3
	φ 75	4-M4x10,4-M5x12	≦ φ 14	38.5	φ 60	5	66	111.5	148	5.5
	φ 90	4-M5x15,4-M6x15	≦ φ 19	44	φ 70	7	80	117	156	11
	φ 100	4-M6x15	≦ φ 19	44	φ 80	7	90	117	156	11

* C1-C10是公制标准马达连接板之尺寸,可根据客户要求单独定做。

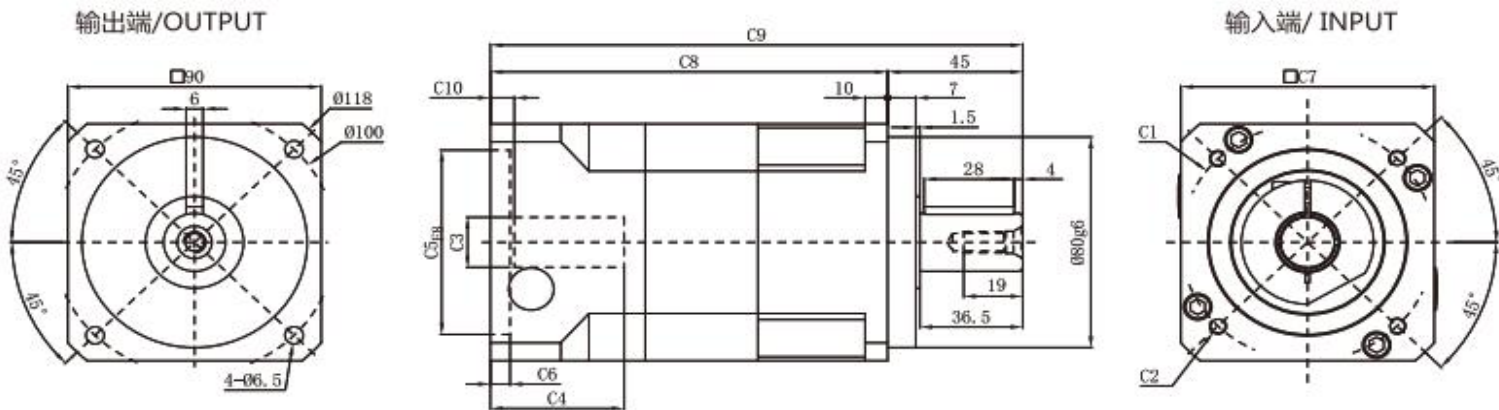
* C1-C10are motor (metric standard) specific dimensions, which could be customised.

外形尺寸图表 / OUTLINE DIMENSION SHEET

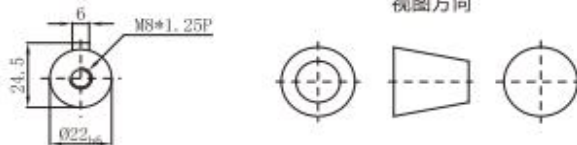
PGH090-L1



PGH090-L2



输出轴径/Output Diameter



*输入马达连接板之尺寸, 可根据客户要求单独定做。
*The input motor specific dimensions could be customised.

尺寸	C1	C2	C3	C4	C5	C6	C7	C8	C9	C10
PGH090-L1	φ 70	4-M4x12,4-M5x12	≦ φ 14	47.5	φ 50	4	80	102	147	6
	φ 75	4-M4x12,4-M5x12	≦ φ 14	47.5	φ 60	5.5	80	102	147	6
	φ 90	4-M5x15,4-M6x15	≦ φ 19	47.5	φ 70	7	80	102	147	7
	φ 98.4	4-M6x15	≦ φ 14	47.5	φ 73	7	80	102	147	7
	φ 98.4	4-M6x15	≦ φ 14	47.5	φ 60	7	80	102	147	7
	φ 100	4-M6x15	≦ φ 19	47.5	φ 80	7	80	102	147	7
	φ 115	4-M8x20	≦ φ 24	61.5	φ 95	10	100	113	161	12.5
	φ 130	4-M8x20	≦ φ 24	61.5	φ 95	10	115	113	161	12.5
	φ 145	4-M8x20	≦ φ 24	61.5	φ 110	10	130	113	161	12.5
PGH090-L2	φ 70	4-M4x12,4-M5x12	≦ φ 14	47.5	φ 50	4	80	141	189	6
	φ 75	4-M4x12,4-M5x12	≦ φ 14	47.5	φ 60	5.5	80	141	189	6
	φ 90	4-M5x15,4-M6x15	≦ φ 19	47.5	φ 70	7	80	141	189	7
	φ 98.4	4-M6x15	≦ φ 14	47.5	φ 73	7	80	141	189	7
	φ 98.4	4-M6x15	≦ φ 14	47.5	φ 60	7	80	141	189	7
	φ 100	4-M6x15	≦ φ 19	47.5	φ 80	7	80	141	189	7
	φ 115	4-M8x20	≦ φ 24	61.5	φ 95	10	100	153	201	12.5
	φ 130	4-M8x20	≦ φ 24	61.5	φ 95	10	115	153	161	12.5
	φ 145	4-M8x20	≦ φ 24	61.5	φ 110	10	130	153	201	12.5
φ 145	4-M8x20	≦ φ 24	70.5	φ 110	10	130	162	210	21.5	

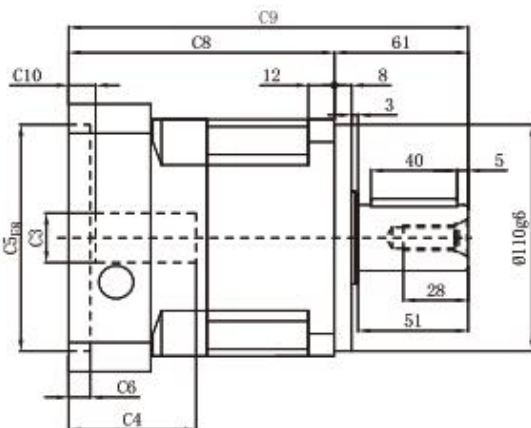
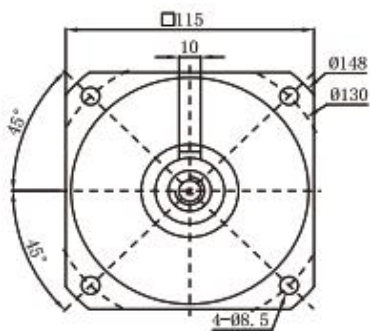
* C1~C10是公制标准马达连接板之尺寸, 可根据客户要求单独定做。

* C1~C10are motor (metric standard) specific dimensions, which could be customised.

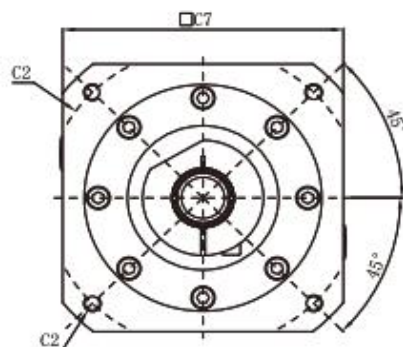
外形尺寸图表 / OUTLINE DIMENSION SHEET

PGH115-L1

输出端/OUTPUT

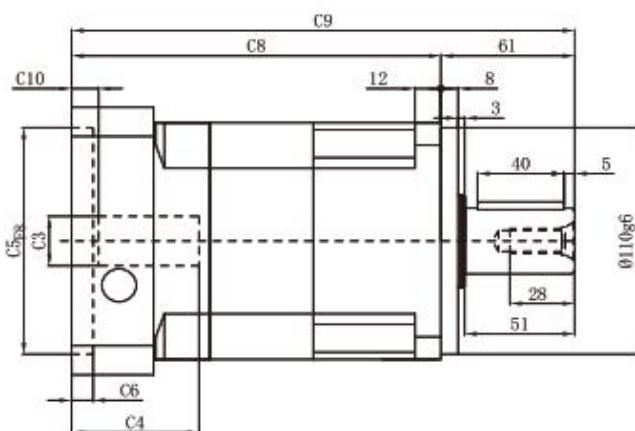
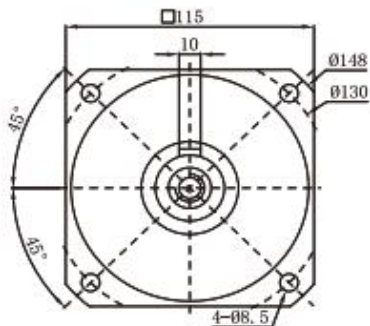


输入端/INPUT

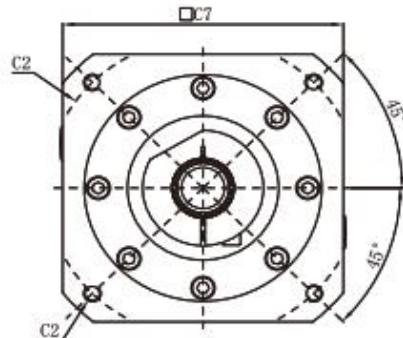


PGH115-L2

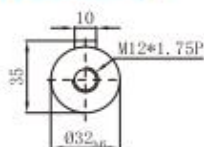
输出端/OUTPUT



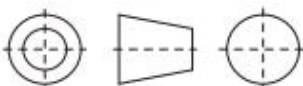
输入端/INPUT



输出轴径/Output Diameter



视图方向



*输入马达连接板之尺寸,可根据客户要求单独定做。
*The input motor specific dimensions could be customised.

尺寸	C1	C2	C3	C4	C5	C6	C7	C8	C9	C10
PGH115-L1	φ 90	4-M5x15,4-M6x15	≦ φ 19	48.5	φ 70	7	115	112.5	174.5	7
	φ 100	4-M6x15	≦ φ 19	48.5	φ 80	7	115	112.5	174.5	7
	φ 115	4-M8x20	≦ φ 24	58	φ 95	10	115	122	184	11.5
	φ 130	4-M8x20	≦ φ 24	58	φ 95	10	115	122	184	11.5
	φ 132	4-M8x20	≦ φ 24	58	φ 85	10	115	122	184	11.5
	φ 145	4-M8x20	≦ φ 24	59	φ 110	10	130	123	185	12.5
	φ 145	4-M8x20	≦ φ 24	68	φ 110	10	130	132	194	21.5
	φ 165	4-M10x30	≦ φ 32	80	φ 130	10	142	148.5	210.5	18.5
	φ 200	4-M12x35	≦ φ 35	82	φ 114.3	8	180	150.5	212.5	20.5
	φ 215	4-M14x35	≦ φ 38	82	φ 180	8	190	150.5	212.5	20.5
PGH115-L2	φ 90	4-M5x15,4-M6x15	≦ φ 19	48.5	φ 70	7	115	160.5	174.5	7
	φ 100	4-M6x15	≦ φ 19	48.5	φ 80	7	115	160.5	174.5	7
	φ 115	4-M8x20	≦ φ 24	58	φ 95	10	115	170	184	11.5
	φ 130	4-M8x20	≦ φ 24	58	φ 95	10	115	170	184	11.5
	φ 132	4-M8x20	≦ φ 24	58	φ 85	10	115	170	184	11.5
	φ 145	4-M8x20	≦ φ 24	59	φ 110	10	130	171	185	12.5
	φ 145	4-M8x20	≦ φ 24	68	φ 110	10	130	180	194	21.5
	φ 165	4-M10x30	≦ φ 32	80	φ 130	10	142	196.5	258.5	18.5
	φ 200	4-M12x35	≦ φ 35	82	φ 114.3	8	180	198.5	260.5	20.5
	φ 215	4-M14x35	≦ φ 38	82	φ 180	8	190	198.5	260.5	20.5

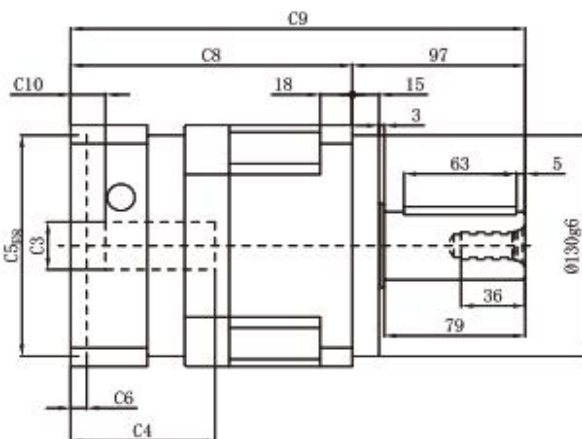
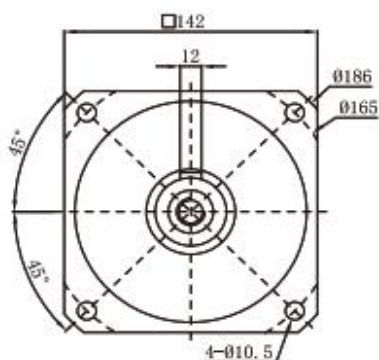
* C1~C10是公制标准马达连接板之尺寸,可根据客户要求单独定做。

* C1~C10are motor (metric standard) specific dimensions, which could be customised.

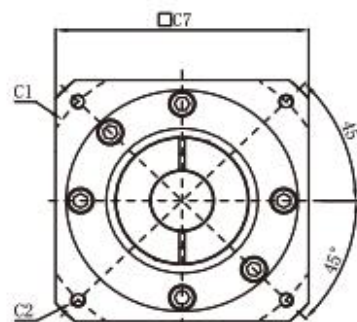
外形尺寸图表 / OUTLINE DIMENSION SHEET

PGH142-L1

输出端/OUTPUT

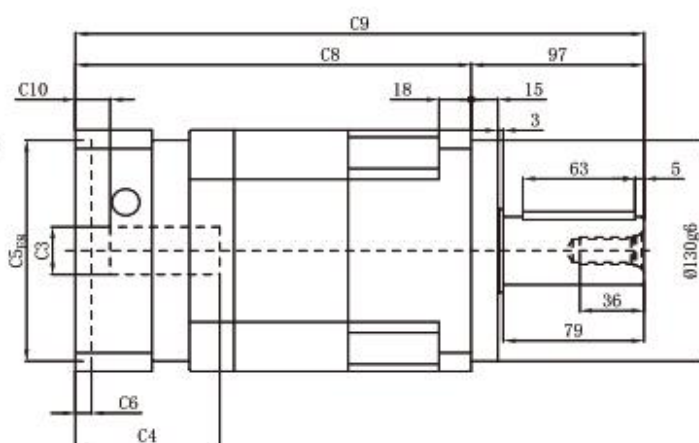
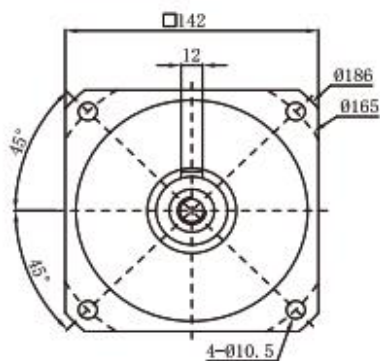


输入端/INPUT

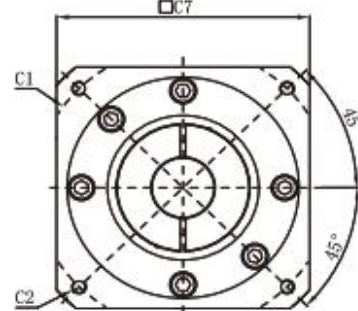


PGH142-L2

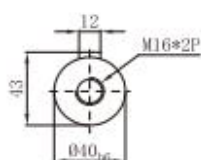
输出端/OUTPUT



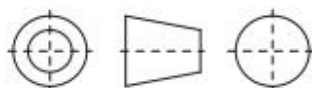
输入端/INPUT



输出轴径/Output Diameter



视图方向



*输入马达连接板之尺寸, 可根据客户要求单独定做。
*The input motor specific dimensions could be customised.

尺寸	C1	C2	C3	C4	C5	C6	C7	C8	C9	C10
PGH142-L1	φ130	4-M8x20	≦ φ24	81	φ110	10	142	158	255	19.5
	φ145	4-M8x20	≦ φ24	81	φ110	10	142	158	255	19.5
	φ165	4-M10x25, 4-M12x35	≦ φ32	81	φ130	10	142	158	255	19.5
	φ175	4-M10x25	≦ φ32	81	φ130	10	150	158	255	19.5
	φ185	4-M10x30	≦ φ35	81	φ150	8	160	158	255	19.5
	φ200	4-M12x35	≦ φ42	83	φ114.3	8	180	160	257	21.5
	φ200	4-M12x35	≦ φ42	115	φ114.3	8	180	192	289	53.5
PGH142-L2	φ130	4-M8x20	≦ φ24	81	φ110	10	142	222	319	19.5
	φ145	4-M8x20	≦ φ24	81	φ110	10	142	222	319	19.5
	φ165	4-M10x25, 4-M12x35	≦ φ32	81	φ130	10	142	222	319	19.5
	φ175	4-M10x25	≦ φ32	81	φ130	10	150	222	319	19.5
	φ185	4-M10x30	≦ φ35	81	φ150	8	160	222	319	19.5
	φ200	4-M12x35	≦ φ42	83	φ114.3	8	180	224	321	21.5
	φ200	4-M12x35	≦ φ42	115	φ114.3	8	180	256	353	53.5
φ215	4-M12x35, 4-M14x35	≦ φ42	83	φ180	8	190	224	321	21.5	

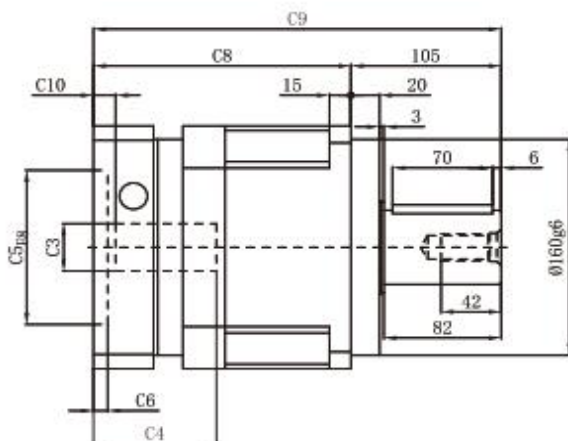
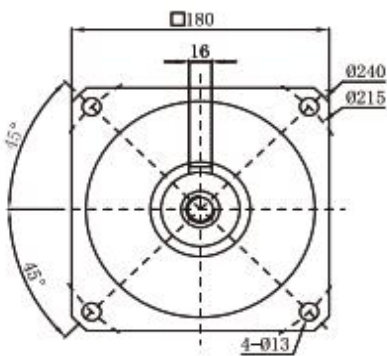
* C1~C10是公制标准马达连接板之尺寸, 可根据客户要求单独定做。

* C1~C10are motor (metric standard) specific dimensions, which could be customised.

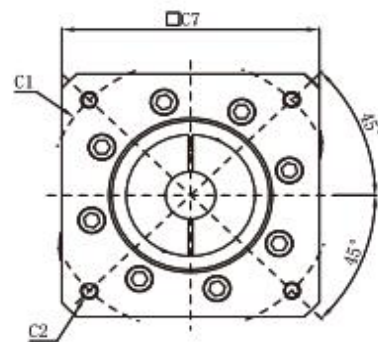
外形尺寸图表 / OUTLINE DIMENSION SHEET

PGH180-L1

输出端/OUTPUT

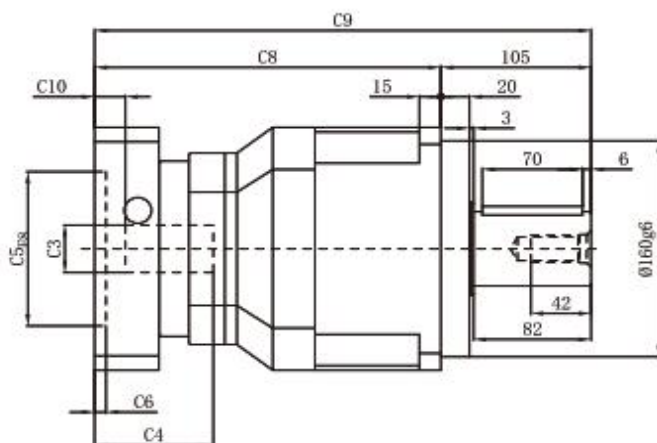
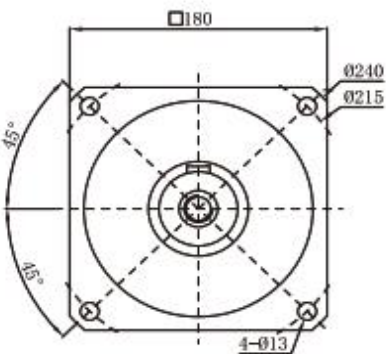


输入端/INPUT

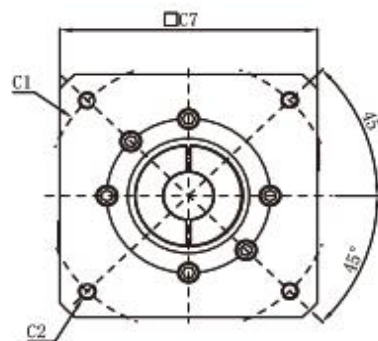


PGH180-L2

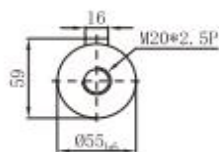
输出端/OUTPUT



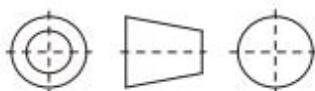
输入端/INPUT



输出轴径/Output Diameter



视图方向



*输入马达连接板之尺寸, 可根据客户要求单独定做。
*The input motor specific dimensions could be customised.

尺寸	C1	C2	C3	C4	C5	C6	C7	C8	C9	C10
PGH 180-L1	φ 165	4-M10x25, 4-M12x35	≦ φ 32	86	φ 130	10	180	180	285	15.5
	φ 200	4-M12x35	≦ φ 42	86	φ 114.3	10	180	180	285	15.5
	φ 200	4-M12x35	≦ φ 42	118	φ 114.3	10	180	212	317	47.5
	φ 215	4-M14x35	≦ φ 42	86	φ 180	10	190	180	285	15.5
	φ 215	4-M14x35	≦ φ 42	118	φ 180	10	190	212	317	47.5
PGH 180-L2	φ 235	4-M10x30, 4-M14x35	≦ φ 55	118	φ 200	10	220	212	317	47.5
	φ 130	4-M8x20	≦ φ 24	81	φ 110	10	142	240	345	19.5
	φ 145	4-M8x20	≦ φ 24	81	φ 110	10	142	240	345	19.5
	φ 165	4-M10x25, 4-M12x35	≦ φ 32	86	φ 130	8	180	242	347	21.5
	φ 200	4-M12x35	≦ φ 42	83	φ 114.3	8	180	242	347	21.5
	φ 200	4-M10x25, 4-M12x35	≦ φ 42	115	φ 114.3	8	180	274	379	53.5
	φ 215	4-M14x35	≦ φ 42	83	φ 180	8	190	242	347	21.5
	φ 215	4-M14x35	≦ φ 42	115	φ 180	8	190	274	379	53.5
	φ 235	4-M10x30, 4-M14x35	≦ φ 55	118	φ 200	10	220	274	379	47.5

* C1~C10是公制标准马达连接板之尺寸, 可根据客户要求单独定做。

* C1~C10are motor (metric standard) specific dimensions, which could be customised.

